



RISE WITH US



All Types of Elevator Services  
Installation, Upgrades & Maintenance

MR Elevator | MRL Elevator | Hydraulic Elevator | Vacuum Elevator

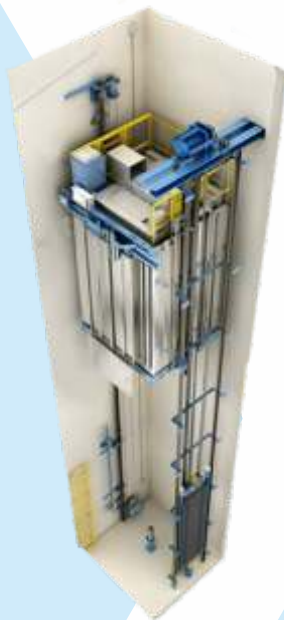
## About Us:

Shriju Elevators is a leading company who provides sustainable and smart urban mobility. Together with our customers, we help organize cities: by moving people and goods, and connecting vertical and horizontal transportation systems. Shriju Elevators is well known in the market for Supply, Installation, Commissioning, Service, Repair and Modernization of Elevators & Escalators in India. We are groomed and experienced. We have experience of more than 15 years in elevator industry. Our Equipments and Material used in the Project is Precisely Engineered from High Grade Materials that are Sourced from Trusted Vendors of the Industry. Cutting Edge Machinery based on Latest Technology is used in the Parts & Equipments that are used for the Completion of the Project. By Having Robust Design, High Performance, Energy Efficiency & Durability, We Stand Out in the Market & our Equipments are also in High Demand in the Market. The Offered Equipments & Services from us can be Customized as per the Specifications Provided by the Customer.



### Machine Room System (MR)

SHRIJU Elevators offers superior ride quality and reliability. Our machine room passenger elevators are a popular choice for private and public sectors, featuring a dedicated room for controllers and mechanical units, ensuring optimal performance



### Machine Room Less (MRL)

MRL System is an innovative elevator solution designed for residential and commercial buildings. It eliminates the need for a dedicated machine room, making it a space-saving and cost-effective option



### Hydraulic Elevator (MRL)

Experience seamless vertical transportation with Shriju Hydraulic Elevator System, designed for residential, commercial, and industrial applications. This cutting-edge technology ensures efficient, reliable, and safe travel.



### Vacuum Elevator

Vacuum Elevator is a revolutionary, space-saving, and energy-efficient transportation solution for residential and commercial buildings. Utilizing advanced pneumatic technology, this elevator provides a smooth, quiet, and safe riding experience.



## Our Philosophy

We are committed to provide advance & high quality vertical and horizontal Lifting Solutions with reliability as well as safety to our customers at an optimum cost & further back them with solid service and support before, during and after sales. Our suppliers also shares the same philosophy because of which we are able to say **TRULY UPLIFTING EXPERIENCE.**

## Our Service

With our 24 hours service line we ensure every complaint it heard immediately Prompt response is provided by our trained engineers, for efficient & effective solutions. Our extensive stock of spares helps keep the turn around time to a minimum. In addition we are available with extensive annual maintenance contract.

## Our Mission

To ease the workload of our customer through innovation in reliability & technology. Just on time delivery To simplify maintenance along with round the clock services To offer lowest cost of ownership, initial saving & yearly saving.

## Our Quality

Shriju Elevators has established itself as a premier manufacturer of high-quality elevators, renowned for their exceptional performance, durability, and safety. With a steadfast commitment to excellence, Shriju Elevators has earned the trust of architects, builders, and homeowners

## Our Vision

Best Customers Services  
Product, Safety & Service Innovations  
Cost efficient quality solutions

**Experience** the Broadest  
Range of Elevator Services:  
From Installation to  
**Maintenance**, We've Got  
You Covered



More Than **750**  
Elevators Installed  
Collaborated with MNC

# PASSENGER ELEVATOR

## AUTOMATIC DOOR

SHRIJU ELEVATORS has been engineered with full automatic doors. Fabricated with most advanced lift controls, appreciated for their high speed, smooth travel and perfect leveling different types of doors Center Opening, Telescopic Opening.



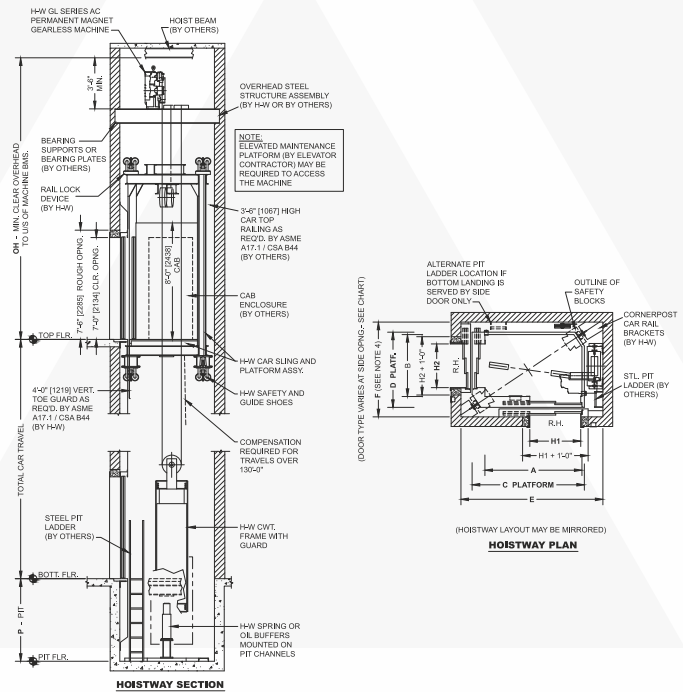
Available Rated Speed **0.63 / 1.0, / 1.5 / 2 MPS**  
 Max Travel Height **66 M**  
 Available Rated Capacity **272 to 1360 Kgs.**  
 Max Person **04 to 20 Passengers**



Side Opening Car Door Mechanism



Centre Opening Car Door Mechanism



Multi-ray Entrance Protection System

LOAD		LIFT WELL		CAR INSIDE		ENTRANCE	MACHINE ROOM			SPEED UP TO 1 m/s.	
Person	Weight	Width	Depth	Width	Depth	E	Width	Depth	Height	Pit	O.H.
	in Kg.	A	B	C	D		F	G	H		
4	272	1900	1300	1100	700	700	2900	3300	2500	1500	4800
6	408	1900	1700	1100	1000	700	2900	3700	2500	1500	4800
8	544	1900	1900	1300	1100	800	2900	3900	2500	1500	4800
10	680	1900	2100	1300	1350	800	2900	4100	2500	1500	4800
13	884	2500	1900	2000	1100	900	3500	3900	2500	1500	4800
16	1088	2500	2100	2000	1300	900	3500	4100	2500	1500	4800
20	1360	2500	2400	2000	1500	2000	3500	4400	2500	1500	4800

• All Dimensions are in MM • This is General Data, It may be changed without notice • All hoist way walls should be minimum 230 mm brick or 150 mm R.C.C.



Center Opening Auto Door (Small Vision)



Center Opening Auto Door (Big Vision)



Hairline Finish Telescopic Auto Door



Center Opening Auto Door (Designer Finish)



Side Opening Auto Door



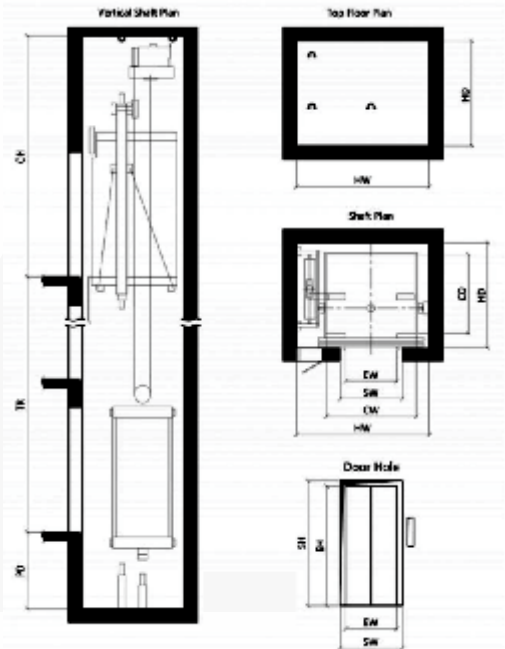
# PASSENGER ELEVATOR



## MANUAL DOOR

Our professionals design and craft elevators with high-grade materials for optimal performance. Choose from stylish finishes – powder-coated, stainless steel, or matte stainless steel – to complement your space and enhance the travel experience.

Available Rated Speed **0.63 / 1.0, / 1.5 / 2 MPS**  
 Max Travel Height **66 M**  
 Available Rated Capacity **272 to 1020 Kgs.**  
 Max Person **04 to 15 Passengers**



### Applications:



Apartment



Warehouse



Industries

LOAD		LIFT WELL		CAR INSIDE		ENTERANCE	MACHINE ROOM			SPEED UP TO 1 m/s.	
Person	Weight	Width	Depth	Width	Depth		Width	Depth	Height	Pit	O.H.
	in Kg.	A	B	C	D	E	F	G	H		
4	272	1300	1300	1100	700	700	2600	3200	2500	1500	4800
5	340	1400	1300	1100	850	700	2600	3350	2500	1500	4800
6	408	1500	1500	1100	1000	700	2600	3500	2500	1500	4800
8	544	1800	1800	1350	1300	800	2850	3800	2500	1500	4800
10	680	2300	2100	2000	1300	800	3500	3800	2500	1500	4800
13	884	2600	2300	2000	1300	900	3500	3800	2500	1500	4800
15	1020	2700	2400	2000	1300	900	3500	3800	2500	1500	4800

•All Dimensions are in MM • This is General Data, It may be changed without notice • All hoist way walls should be minimum 230 mm brick or 150 mm R.C.C.



Manual Collapsible Door



Manual Imper Orated Door



Manual Swing Door



Manual Telescopic Door



Full Glass Manual Swing Door





## GOODS ELEVATOR

### FREIGHT ELEVATOR

For carrying various sized goods and equipment from one floor to another, we design and develop Goods Elevator. These elevators are designed with utmost precision and thus, ensure noiseless operation. Clients appreciate excellent load bearing capacity with slow speed and smooth running operation.

### WE ARE PROVIDING

- Accurate Leveling
- Large Door Width
- Single Way Door
- Double Way Door
- Two Panels
- Centre Opening & Double Folded

Available Rated Speed     **0.50 / 1.0, / 1.50 MPS**  
 Max Travel Height         **66 M**  
 Available Rated Capacity   **500 to 4000 Kgs.**



LOAD	LIFT WELL		CAR INSIDE		ENTERANCE		MACHINE ROOM		SPEED UP TO 0.7 m/s.	
	Width	Depth	Width	Depth	Width	Depth	Depth	Height	Pit	O.H.
Weight in Kg.	A	B	C	D	E	F	G	H	K	M
500	1900	1500	1100	1200	750	3000	3800	2500	1600	4800
1000	2300	2100	1400	1800	1000	3000	4000	2500	1600	4800
1500	2600	2300	1700	2000	1250	3200	4200	2500	1600	4800
2000	2600	2800	1700	2500	1500	3200	4200	2500	1600	4800
2500	2900	2800	2000	2500	1500	3500	4400	2500	1600	4800
3000	2900	3300	2000	3000	2000	3500	4500	2500	1600	4800
4000	3400	3300	2500	3000	2000	4000	4600	2500	1600	4800

• All Dimensions are in MM • This is General Data, It may be changed without notice • All hoist way walls should be minimum 230 mm brick or 150 mm R.C.C.

# HOSPITAL ELEVATOR

## MANUAL DOOR

Shriju offer Hospital Lifts for easy transportation of bulky equipment as well as patients. Stretcher lifts are used to carry maximum of 50 Passengers. We provide Geared, Gearless, Machine room, Machine Room less elevators (MRL).



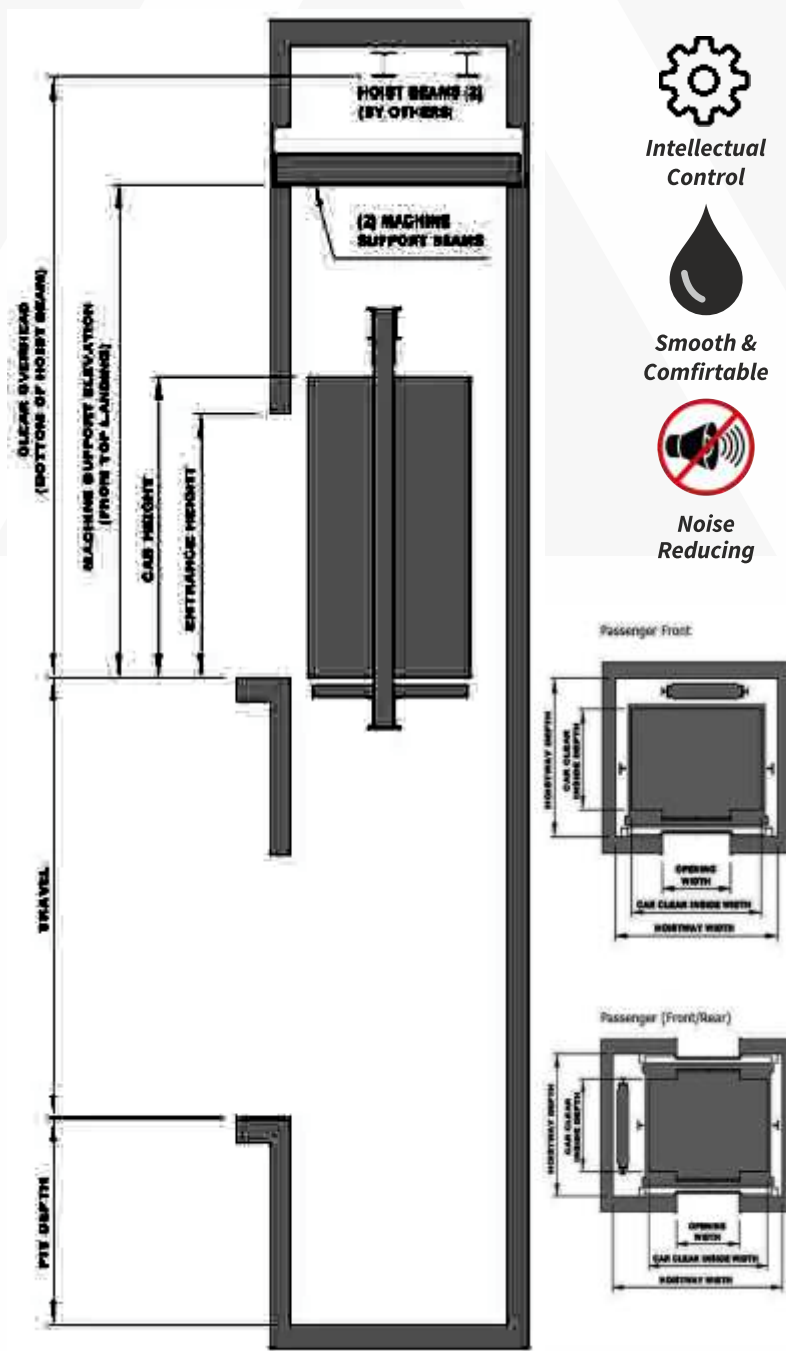
Available Rated Speed    **0.63 / 1.0 MPS**  
 Max Travel Height        **66 M**  
 Available Rated Capacity    **1020 to 1768 Kgs.**  
 Max Person                    **15 to 26 Passengers**

**Providing Effortless Vertical Solution with prior Safety**



CAPACITY		SHAFT		CAR INSIDE		ENTRANCE
Person	Weight	Width	Depth	Width	Depth	
	in Kg.	A	B	C	D	E
15	1020	1900	3000	1000	2400	800
20	1360	2300	3000	1300	2400	900
26	1768	2600	3000	1600	2400	1000

• All Dimensions are in MM • This is General Data, It may be changed without notice  
 • All hoist way walls should be minimum 230 mm brick or 150 mm R.C.C.



**Intellectual Control**



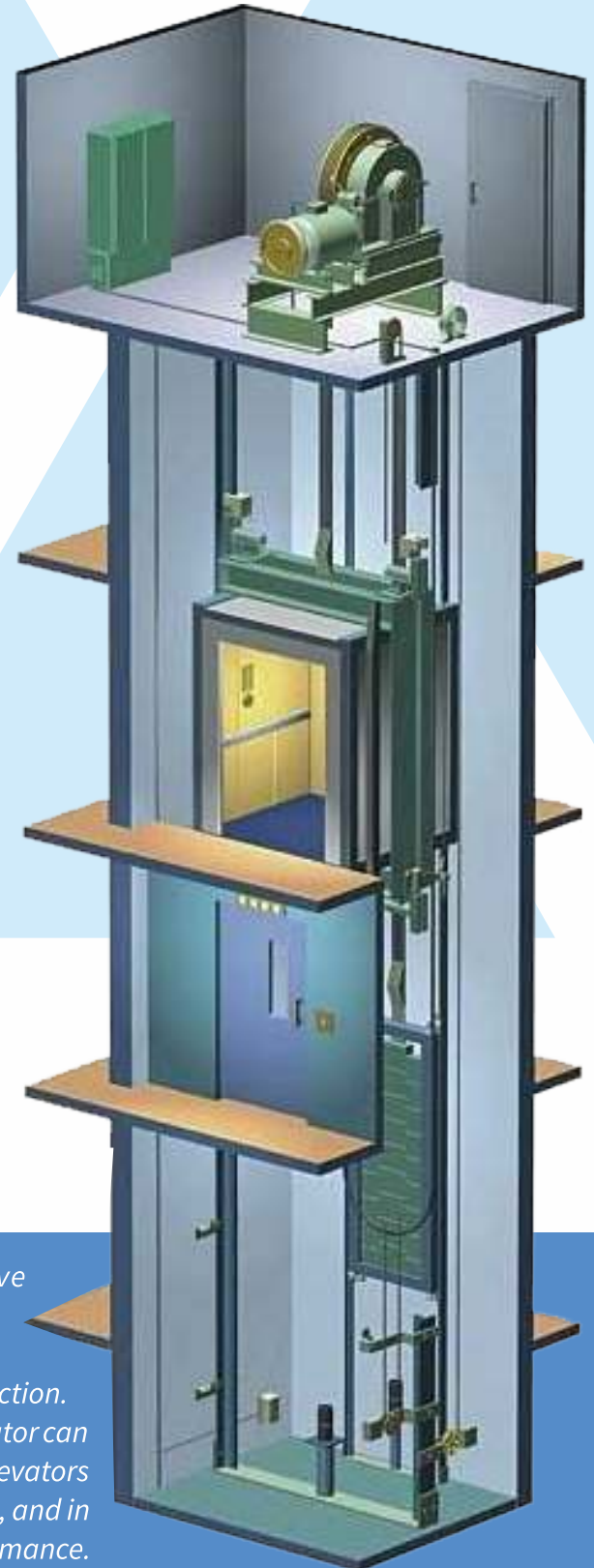
**Smooth & Comfortable**



**Noise Reducing**



# TRACTION ELEVATOR

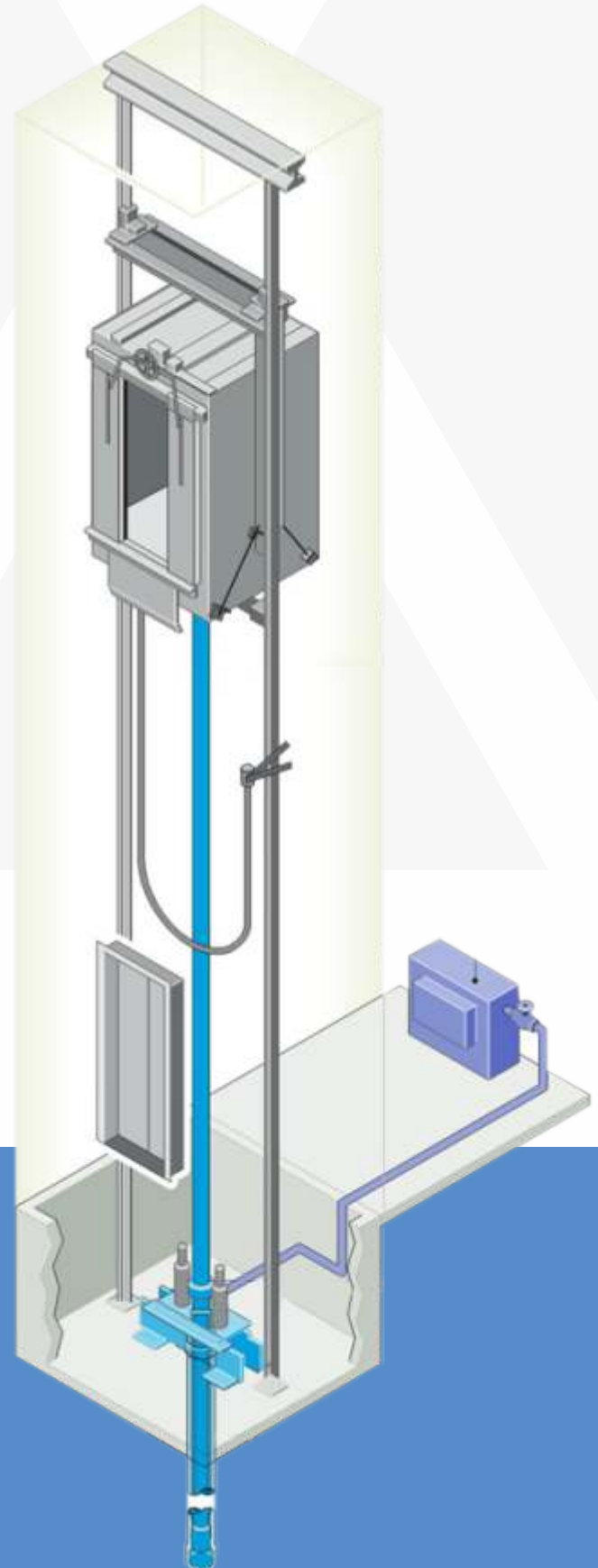


**SHRIJU** provide the traction elevators equipment of innovative technologies, stylish design and a full maintenance cycle are the main principles of the company's work. Even a single glance at this type of elevators allows you to note their aesthetic and technical perfection. Depending on the technical features of the building, the panoramic elevator can have different carrying capacity, dimensions and speed. Panoramic elevators can be installed both in hotels and shopping and entertainment centres, and in residential buildings. There are variants for external and internal performance. To achieve maximum visibility in the panoramic elevator glass panels from floor to ceiling are used. Transparent car is placed in special metal frame, to which all mechanical equipment is fastened. The open design allows passengers to enjoy the surrounding view, which makes the riding the elevator even more pleasant. Panoramic elevators make a small trip out of the movement.





# HYDRAULIC ELEVATOR

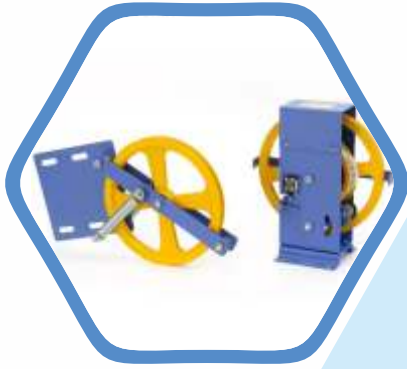


*Hydraulic elevators are heavy-duty elevators built for frequent, long-term use. They also have an ultra-smooth ride quality and are typically very quiet. They are one of the best elevators for durability, larger weight capacities, and serving a higher number of floors.*

## SAFETY FEATURES

### Over Speed Governer (OSG)

These are the safety devices to prevent the car from falling should the elevator exceed its rated speed or should the rope break for some reason. Even should the rope break and the car falls at a certain speed, the governor begins operating and a connected rope is tensioned.



### Multi-ray Entrance Protection System

Door sensors (sometimes known as photoelectric or infrared beam, electric safety door edges, door detector, electric proximity edges, or electric doorman) is an elevator device that detects a passenger or an object on the doorway which prevents the doors from closing (usually installed for accessibility).



### Emergency Rescue Device (ERD)

Elevator emergency automatic rescue device (also known as ERD) is a special device installed in an elevator which is only used during an event of a power failure or blackout in a building.



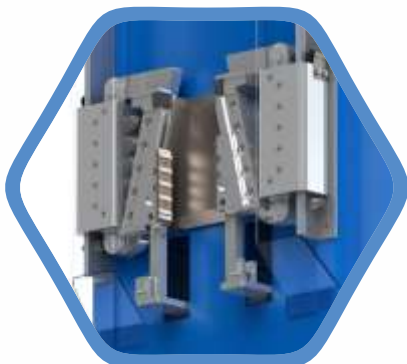
### Emergency Alarm Switches

A bell used to call attention and assistance. Operated by a pushbutton inside the car. May be located in the elevator shaft, on a suitable landing, or on the car roof. A button for activating the alarm bell. Also activates voice connection if remote monitoring is used. Located in the car, with additional buttons on the car roof and underneath the car.



### Safety Brakes

Elevators also have a safety brake that is attached to the underside of the car. Here's how the safety brake works. If the electronics detect that the car is speeding downward, it jams a metal brake from underneath the car into a channel in the guide rails, the metal rods along which the elevator travels.





### **Hoistway Safety Switches**

*Inspection speed limit switches are installed near the top and bottom of the hoistway positioned so that if operated while the elevator is travelling at inspection speed, the car will stop at a position which leaves a person ample room from the hoist way overhead or the pit floor.*



### **Door Interlock Protection**

*An elevator door moving arrangement includes a door mover and an interlock device supported near a lower edge of cabin doors. The strategic position of the door mover and the interlock device minimizes the distance between the sill member and the operative components for moving the doors. In one example, the entire door mover assembly and the interlock are located beneath a sill member, which is beneath the bottom edge of the doors.*



### **Pit Buffers**

*A buffer is a device designed to stop a descending car or counterweight beyond its normal limit and to soften the force with which the elevator runs into the pit during an emergency. They may be of polyurethane or oil type in respect of the rated speed.*



### **Fire Emergency Systems**

*This emergency elevator system is designed to evacuate people from a high-rise building during an emergency such as fire or terrorist attack. One of the elevator cars will always stay on a designated upper floor and the other one at the ground level. The top elevator car is connected to the emergency stairs.*



### **Emergency telephone or communications devices**

*Based on the need for emergency assistance, the elevator phone is required to have the features of multiparty call and automatic dialing. At the same time, considering the complex environment in the elevator car, the phone itself must also have features such as vandal resistance, anti-knock and anti-interference.*



# CABIN DESIGN



*SS Hairline Finish*



*Rose Gold Mirror*



*Wooden Finish*



*Black Mirror*



*Gold Mirror*



*Designer Finish*





*Rose Gold Cabin Ceiling*



*Cabin Flooring*



*SS Finish Cabin Ceiling*



*Cabin Flooring*





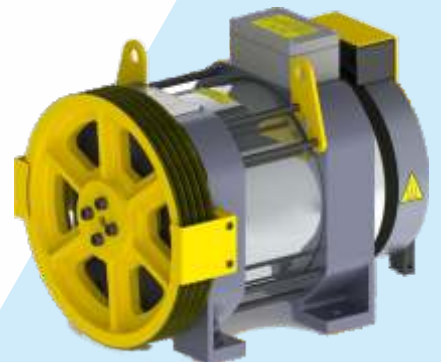
## CONTROLLERS & DRIVES



## GEARED MACHINE



## GEARLESS MACHINE







*SJ -C01*



*SJ -C02*



*SJ -C03*



*SJ -C04*



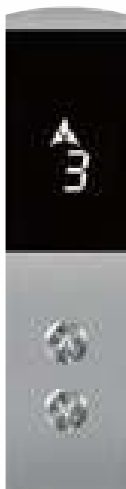
*SJ -CD01*



*SJ -RFID02 (BIOMETRIC ACCESS)*



*SJ -L02*



*SJ -L03*



*SJ -L04*



*SJ -RFID03*



*SJ -L05*



*SJ -C05*

We are technically associated with



## SHRIJU ELEVATORS & ESCALATOR

+91-98775-56217, 79017-05566

info@shrijuelevators.com

www.shrijuelevators.com

VPO Bhullarai, Teh. Phagwara

Distt. Kapurthala - 144401

(Punjab) India



Scan to visit our Website

